



# Risk Management Within IPSE Programs

KATHY HARGIS  
MISTY PARSLEY  
LIPSCOMB UNIVERSITY

# Overview of IDEAL

- ↴ 2 year certificate program
- ↴ Optional third year for independent living
- ↴ 2018-2019- 10/16 students in dorms
- ↴ 6 hours audit courses/6 hours speciality courses per semester
- ↴ 85% or more of their time spent with traditional college students



# Overview of Risk Management

- ↓ Assess the risks of creating a new program
- ↓ Key working relationship with PSE Administrators is key
- ↓ Develop protocols to address risks to the program



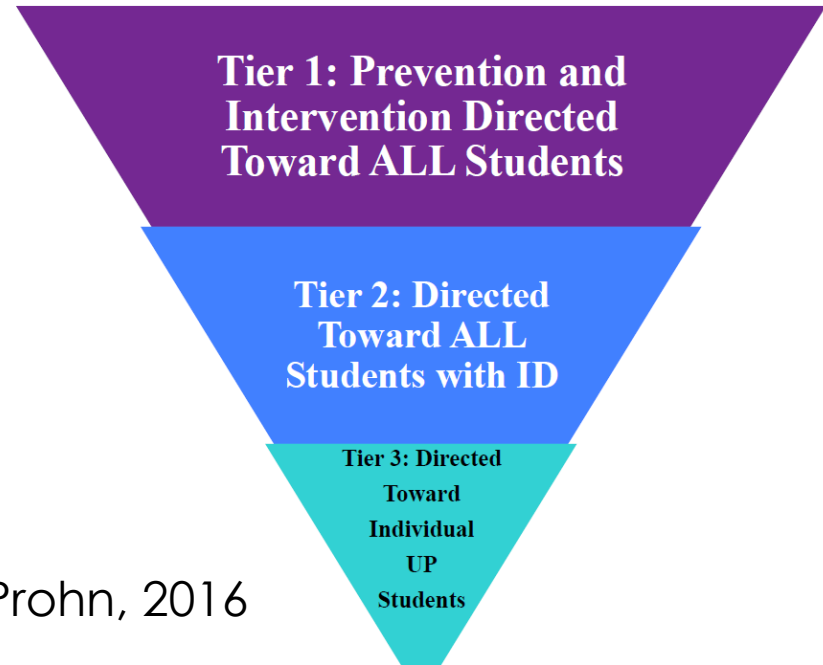
# Overview continued



- ↓ Determine the Duty of Care for participants
- ↓ Monitor the program for continual improvement
- ↓ Risk management vs. Campus Security

# Why is Risk Management a concern?

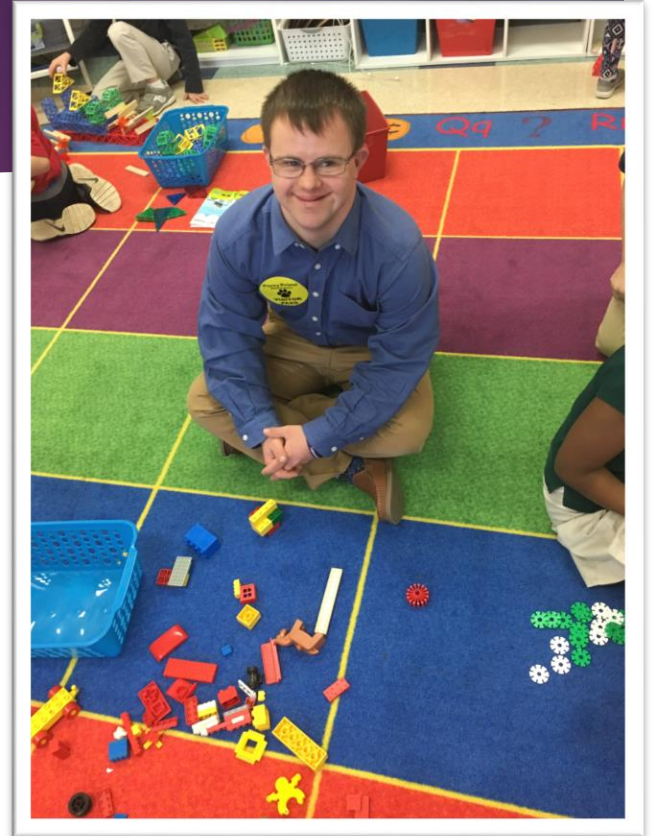
- ↴ Greater vulnerability
- ↴ More presumed medical risks
- ↴ Decision making/problem solving



Westling, Kelley, Prohn, 2016

# Specific Risks to Consider

- ↳ Transportation of students
- ↳ Vetting internship supervisors
- ↳ Housing





# On-campus housing

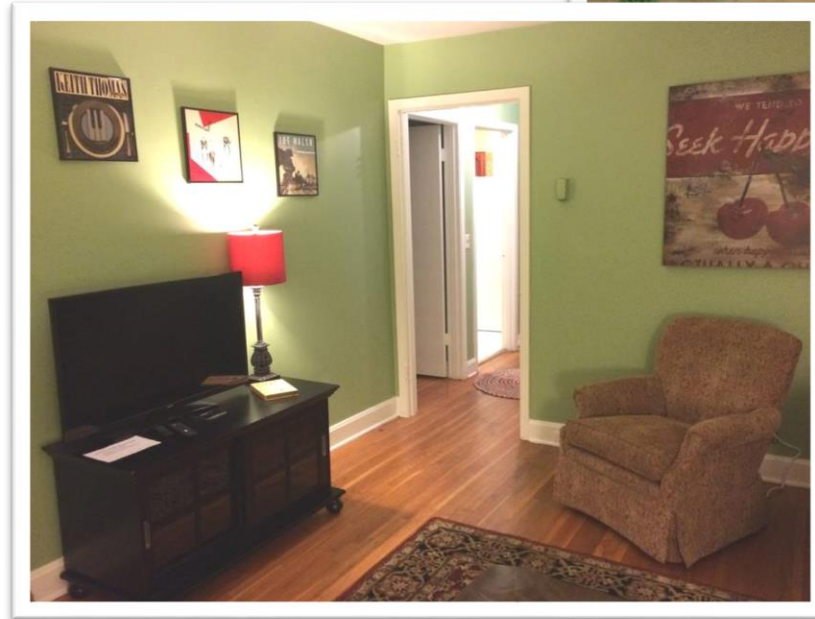
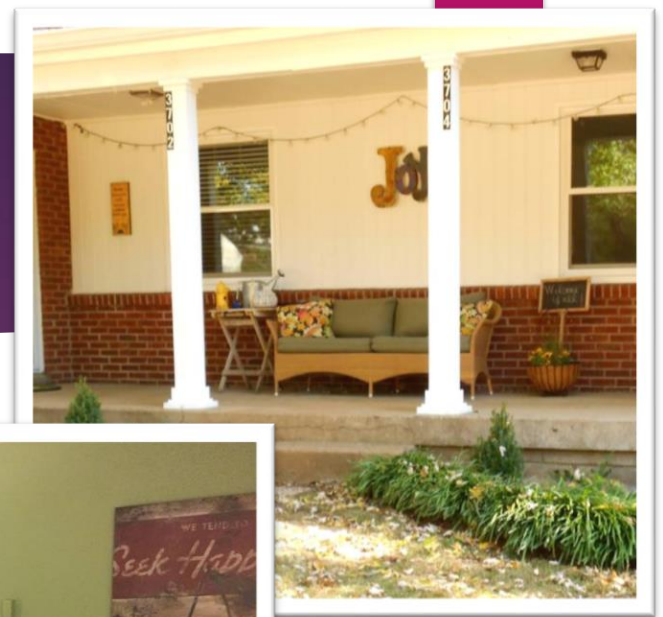


← Safety procedures

← Access

# Off-campus housing

- ← University owned
- ← Non-university owned
- ← Insurance/legal considerations
- ← “Lease” with landlord
- ← Student/Family agreement with IDEAL staff





# Specific Risks continued

- ↳ Parent piece- effective communication
- ↳ Summer camp or service learning trips
- ↳ Title IX- does it apply?



# Lessons Learned



# Risk Reduction Tips

- ↳ Develop Advisory council
- ↳ Reducing unknowns- reports, IEPs on incoming students
- ↳ Knowing safety/security officers

# Wallet Card

<https://www.justdigit.org/wallet-cards/>

Individuals with developmental disorders are seven times more likely than other people to come into contact with police (Debbaudt, 2002)

## **I would like to cooperate. To help me please:**

- Clearly identify yourself.
- Avoid touching me or restraining me, if possible.
- Talk slowly, directly and use concrete, clear language.

## **I may:**

- Speak too loudly, too softly or with unusual intonation.
- Be sensitive to loud noises and flashing lights.
- Be nervous and/or overwhelmed.

**Emergency Contact: Lisa**  
**Phone Number: 513**

# Risk Reduction Tips

- ↓ Have a specific plan especially in dorms
- ↓ Stay in communication with risk management/general counsel
- ↓ Educate students on safety plans
- ↓ Conservatorship/FERPA



# References

- ↓ Kelley, K. (2017). Developing Inclusive Residential Living on College Campuses. *How To Think College*, 2. Boston, MA: University of Massachusetts Boston, Institute for Community Inclusion.
- ↓ Westling, D., Kelly, K., and Prohn, S. (2016) A Tiered Approach to Promote Safety and Security in an Inclusive Postsecondary Education Program for College Students with Intellectual Disability. *DADD Online Journal* (ISSN 2377-3677), Volume 3, Number 1, December 2016.



# Questions?

[Misty.parsley@lipscomb.edu](mailto:Misty.parsley@lipscomb.edu)

[Kathy.hargis@lipscomb.edu](mailto:Kathy.hargis@lipscomb.edu)