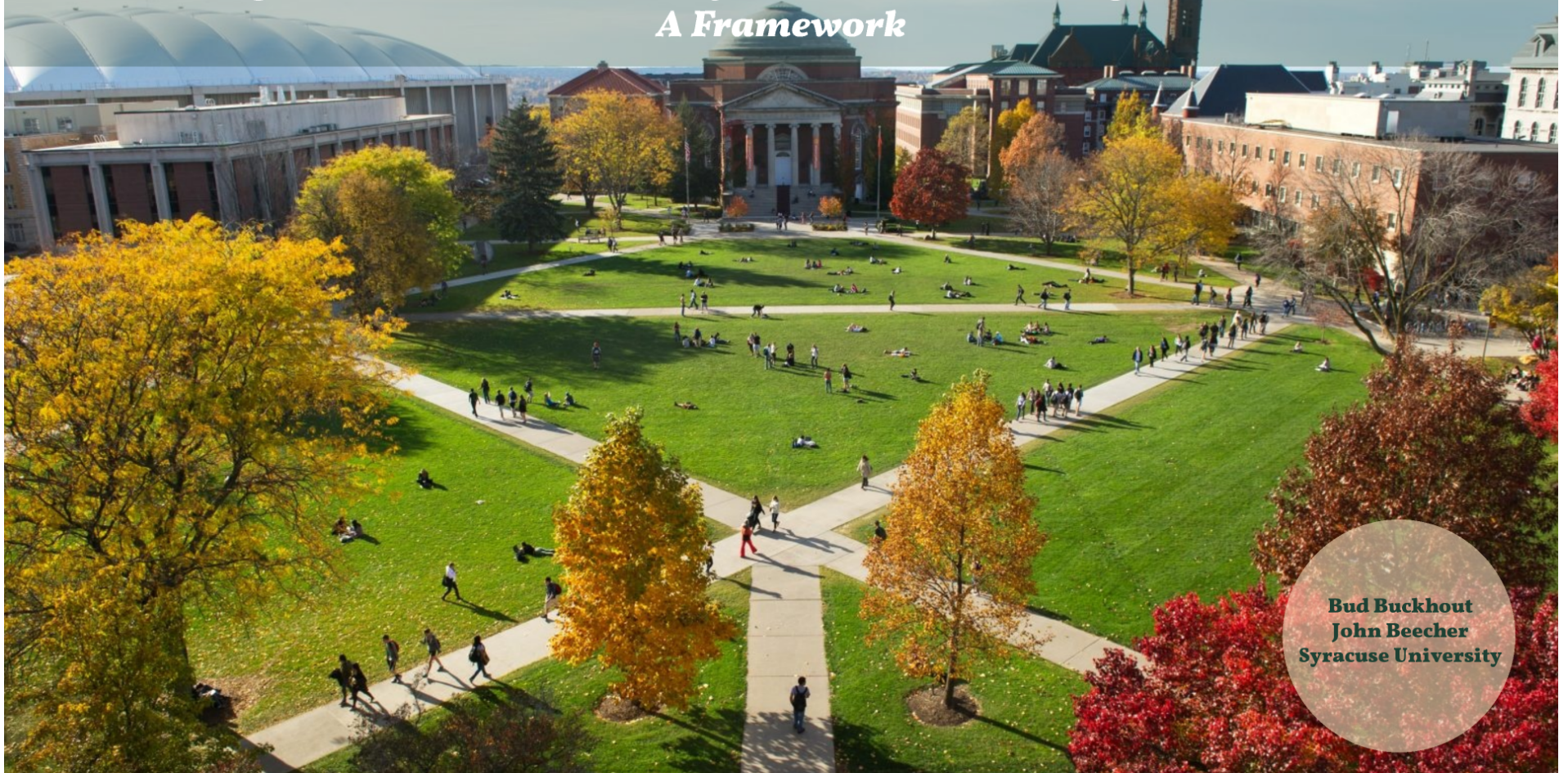
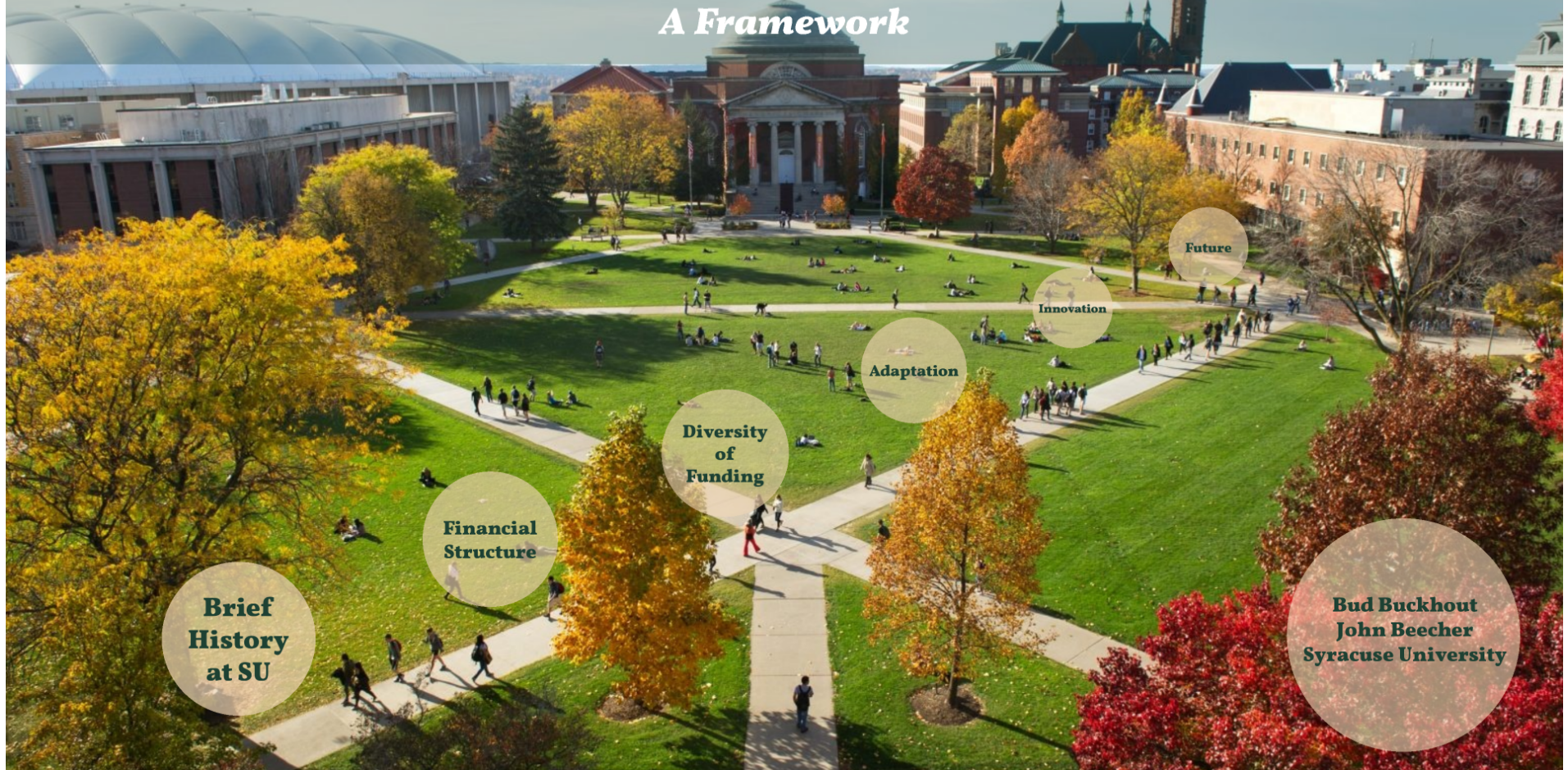


Building Financial Stability in Inclusive Higher Education: A Framework



**Bud Buckhout
John Beecher
Syracuse University**

Building Financial Stability in Inclusive Higher Education: A Framework



**Brief
History
at SU**

**Financial
Structure**

**Diversity
of
Funding**

Adaptation

Innovation

Future

**Bud Buckhout
John Beecher
Syracuse University**

Presenters



Bud Buckhout

Bud Buckhout is the Director of InclusiveU and the Assistant Director of the Taishoff Center for Inclusive Higher Education at Syracuse University.



John Beecher

John Beecher is the Executive Director of Finance and Strategic Initiatives for the School of Education at Syracuse University.

Building Financial Stability in Inclusive Higher Education: A Framework



**Brief
History
at SU**

**Financial
Structure**

**Diversity
of
Funding**

Adaptation

Innovation

Future

**Bud Buckhout
John Beecher
Syracuse University**

Brief History

- Inclusive Higher Education has been a hallmark at Syracuse University since the Center for Human Policy began in 1971
- Burton Blatt, Steve Taylor, Doug Biklen
- OnCampus 1999
- Access 2006
- Taishoff Center 2009 - Alignment
- InclusiveU 2014

Syracuse University
Lawrence B. Taishoff Center
for Inclusive Higher Education

INCLUSIVEU

**Research
Funding**

Gifts

Staffing

Funded Research



**Federal
Research**

**New York
State Support**



Federally Funded Programs

- Fund for the Improvement of Post-Secondary Education (FIPSE)
- National Institute on Disability and Rehabilitation Research (NIDRR)
- Transition and Post-secondary Programs for Students with Intellectual Disabilities (TPSID)
 - 2015-2020 (1 of 25 awarded)

New York State Support

New York State Assembly

- Budgeted grants through state representatives
- Office of Governmental Relations
- 2-year terms, dealing with turnover

An aerial photograph of a university campus with green lawns and a paved walkway. Several people are walking on the path. A large teal circle is overlaid on the image, containing the title and bullet points.

Gifts & Endowment

- Major gift (\$3M) in 2009 to establish center
- Commitment to endow over time
 - Guaranteed annual payout for operations
 - Increasing over time as TPSID funding ends
- Need to diversify donors



Staffing

- Faculty Researcher (Executive Director)
- 2011 Dee (Assistant Director Taishoff)
- 2014 Bud (Associate Dir. Taishoff, Center Dir. InclusiveU)
- 2015 Brianna (Internship Coordinator)
- 2016 Sam (Student Support Specialist)
- Admin assist, students, mentors, etc
- Marketing

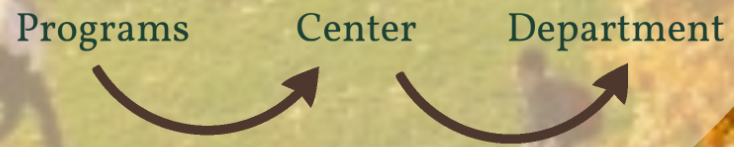
Building Financial Stability in Inclusive Higher Education: A Framework



Financial Structure

Not a typical tuition/aid model
Not a business model
What is this?

- Conversations across campus
- Conversations with potential donors and advisory board



**Our
Structure**

**Sharing
Resources**

Our Structure

The grants and programs were housed in an academic department

- Got messy - keeping all these activities separate from departmental activities

Created a new "department"

- Now able to track revenues and expenses easier
- All Taishoff Center funds are separate: tuition revenues, Medicaid revenues, general operating expenses, grants, gifts, endowments

Our Structure

The grants and programs were housed in an academic department

- Got messy - keeping all these activities separate from departmental activities

Years

Created a new "department"

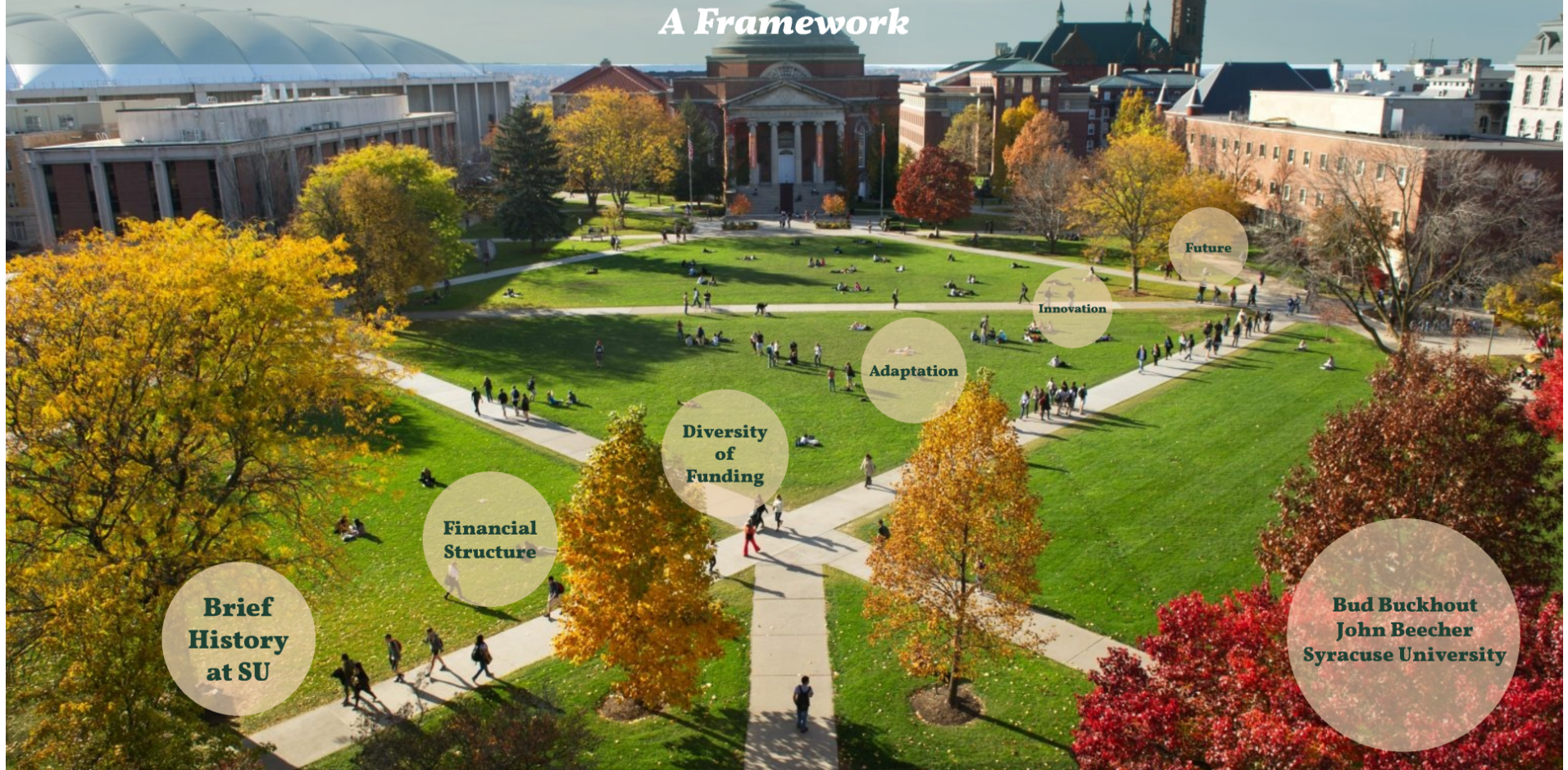
- Now able to track revenues and expenses easier
- All Taishoff Center funds are separate: tuition revenues, Medicaid revenues, general operating expenses, grants, gifts, endowments



Sharing Resources

- Shared administrative assistance
- Shared equipment (copiers, etc)
- Graduate Assistants (tuition)
- Space, utilities paid for by School of Education

Building Financial Stability in Inclusive Higher Education: A Framework



**Brief
History
at SU**

**Financial
Structure**

**Diversity
of
Funding**

Adaptation

Innovation

Future

**Bud Buckhout
John Beecher
Syracuse University**



Funding Sources

- Research
 - Office of Sponsored Programs
 - Office of Sponsored Accounting

2014-15

2018-19

2020-21

In-Kind

Students

Funding Sources

- Research
 - Office of Sponsored Programs
 - Office of Sponsored Accounting
- Gifts/Endowments
 - Institutional Advancement

2014-15

2018-19

2020-21

In-Kind

Students

Funding Sources

- Research
 - Office of Sponsored Programs
 - Office of Sponsored Accounting
- Gifts/Endowments
 - Institutional Advancement
- University Support-"In kind"
 - School of Education Dean

2014-15

2018-19

2020-21

In-Kind

Students

Funding Sources

- Research
 - Office of Sponsored Programs
 - Office of Sponsored Accounting
- Gifts/Endowments
 - Institutional Advancement
- University Support-"In kind"
 - School of Education Dean
- Students!
 - Self Direction

2014-15

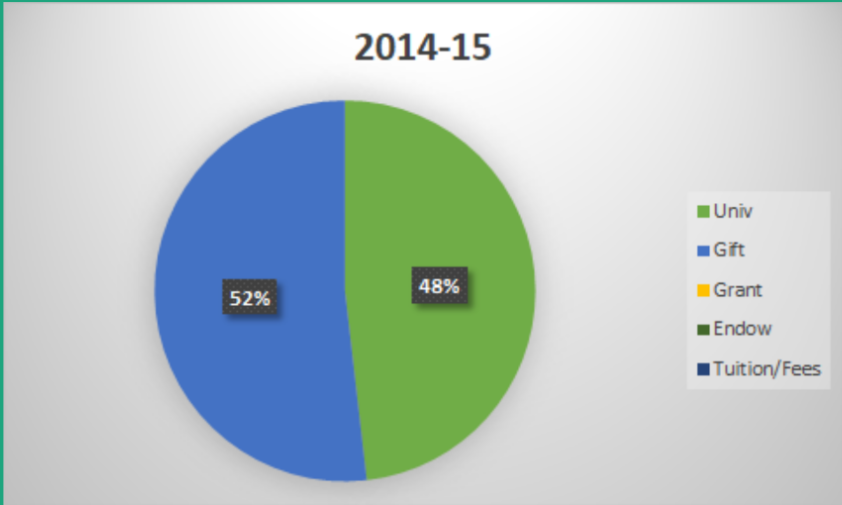
2018-19

2020-21

In-Kind

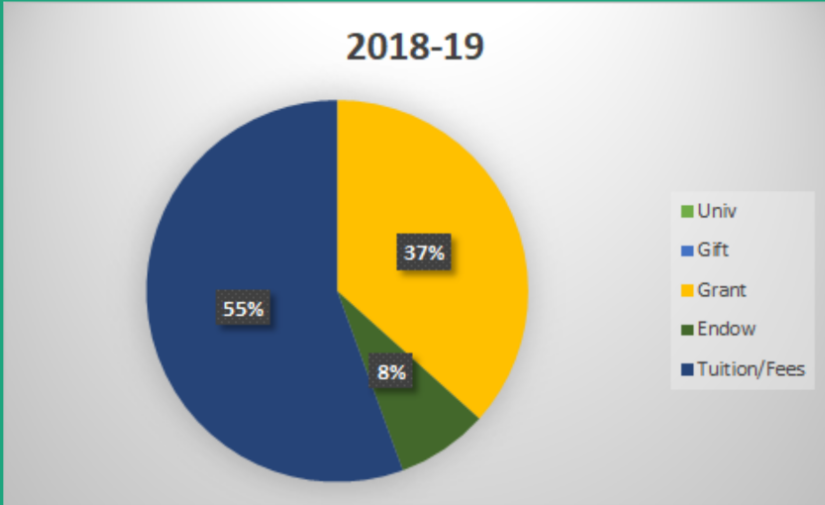
Students

Revenue Sources



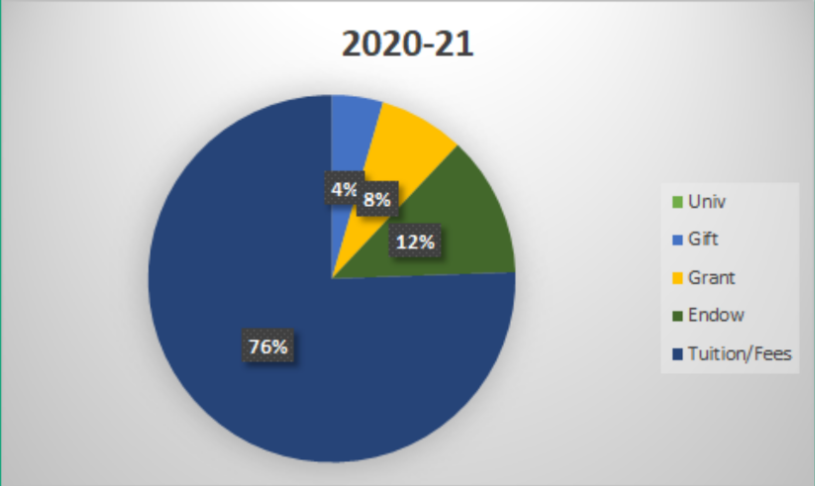
>\$200,000

Revenue Sources



>\$1.1 Million

Revenue Sources



>\$1.1 Million



In-Kind Support

School of Education

- Business Office
 - Budget and Planning Support
 - HR/Payroll
 - Billing and Collections
 - Grant Proposals
- Space/Utilities/Facilities
- Advancement Officer



Student Revenues

- Tuition
- Transition Fees
- Support Services
- Housing/Dining

Building Financial Stability in Inclusive Higher Education: A Framework



**Brief
History
at SU**

**Financial
Structure**

**Diversity
of
Funding**

Adaptation

Innovation

Future

**Bud Buckhout
John Beecher
Syracuse University**



Adaptation

Inclusion of this program into the University is similar to inclusion of our students into the University

We are always:

- Educating
- Advocating
- Improvising
- Adapting

**University
College**

**Human
Resources**

**Friends
Across
Campus**

The background of the slide is a photograph of a university campus. It shows a wide, green lawn with several people walking or sitting on it. A paved path runs across the middle ground. A large, semi-transparent teal circle is centered over the image, containing the text.

University College

Increasingly invaluable partnership

Bursar/Registration

SAS



Human Resources

Remitted Tuition Benefits

From 8 courses over 4 years to the number of credit hours needed to complete the certification requirements

Friends Across Campus



Building Financial Stability in Inclusive Higher Education: A Framework



**Brief
History
at SU**

**Financial
Structure**

**Diversity
of
Funding**

Adaptation

Innovation

Future

**Bud Buckhout
John Beecher
Syracuse University**



Innovation

**Because we don't fit the mold,
we must be innovative!**

CTP- designation

Students fill out FAFSA

Internships- VR

**Dorm
Living**

**Financial
Aid**

Internships

Students in the Dorms



<iframe width="640" height="360" src="http://simclairstoryline.com/resources/embeds/jw8-embed.html?client=googimakfile-https://content.uplynk.com/140f1ddb1267492fb8ebba99d7f7be4.m3u8&autostart=false" /></iframe>

Who is paying for this?

Residential Mentors

Additional Supports

Where are our students from?



Paying for Housing

Residential Services

Pilot program with Medicaid for
housing and meal plan budget



Residential Mentor Program

Live with our students

Room paid - hired by student

Application/Screening Process



Additional Support

Students now on campus 24/7

Need to be more available and cover more time

Developed a fee structure dependent on needs

Charged to family



Opening More Doors

No longer limited to those in New York State or those that live within driving distance

Current students from California, New Jersey, Pennsylvania, New York City

Opening opportunities for students from anywhere (even international interest)



Financial Aid

Working with University College

- Experts at handling non-traditional students
- Ability to work with us in order to make our students FAFSA eligible

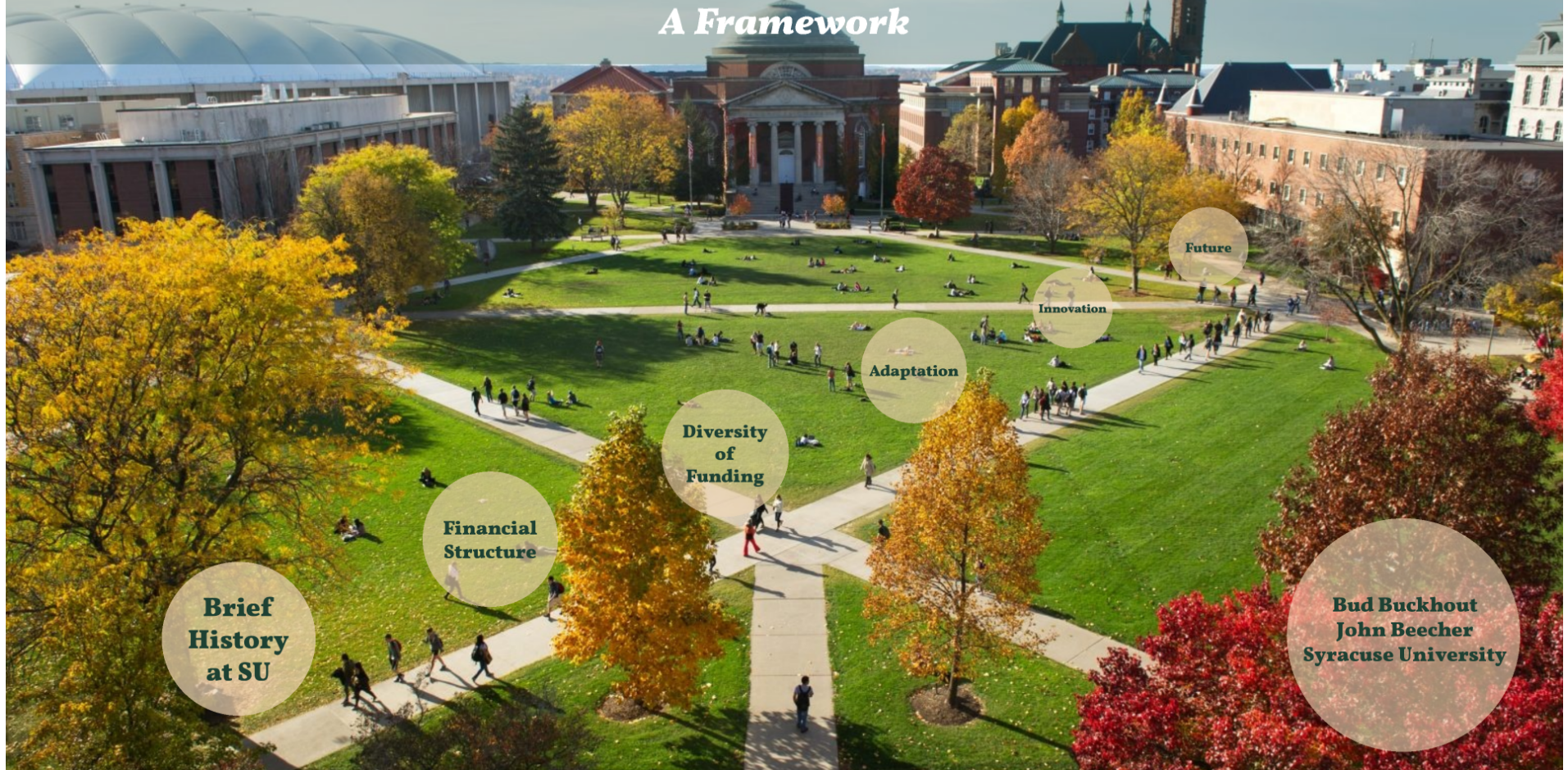


Internships

Fourth year consists of several internships

- On and off campus
- Valuable experience
- Revenue generating
- Paid for through Medicaid - additional year of funding
- Meets CPT requirements

Building Financial Stability in Inclusive Higher Education: A Framework



**Brief
History
at SU**

**Financial
Structure**

**Diversity
of
Funding**

Adaptation

Innovation

Future

**Bud Buckhout
John Beecher
Syracuse University**

Grand Plans

What does the future hold for
Inclusive Higher Education at
Syracuse University?



**More
Research**

**More
Students**

**More
Innovation**



More Research

- Federal Funding applications
- Continuously advocating for State grants
- Look to foundations for support
- Partnering with other researchers on campus
- Establishing a Center on Disability and Inclusion



More Students

- Continue to blaze a trail for inclusive higher education and open doors for more students
- Increase offerings
- Recruit more out-of-state students
- Capacity - what is our tipping point?



New Avenues

- Orientation Weeks
- Online Offerings
 - Current students
 - Prospective students
 - Out-of-state students
 - Current educators
- Families with college-aged children

Building Financial Stability in Inclusive Higher Education: A Framework



**Brief
History
at SU**

**Financial
Structure**

**Diversity
of
Funding**

Adaptation

Innovation

Future

**Bud Buckhout
John Beecher
Syracuse University**